

PARTH  
**Lake View**

✦ AIROLI ✦



Artist's Impression

**A WORLD OF TRANQUILITY**  
**A LIFE OF LUXURY**

---

**2 & 3 BHK LUXURY BALCONY HOMES**

# PARTH Lake View

◆ AIROLI ◆

## Project Highlights

G+ 23 Storey High-Rise Tower

2 & 3 BHK Balcony Homes

Spacious carpet areas

Prime & Main Road Location

Lifetime Lakeviews & Mountain Views

Grand Entrance Lobby

Modern Rooftop Amenities

All conveniences minutes away

Close by to commercial hubs

Grand entry gate adjacent to the lake

LAVISH BALCONY  
IN EVERY ROOM

LIFETIME LAKEVIEW  
& MOUNTAIN VIEW

PANORAMIC CITY  
WITH CREEKVIEW

Actual View of  
Lake & Mountain



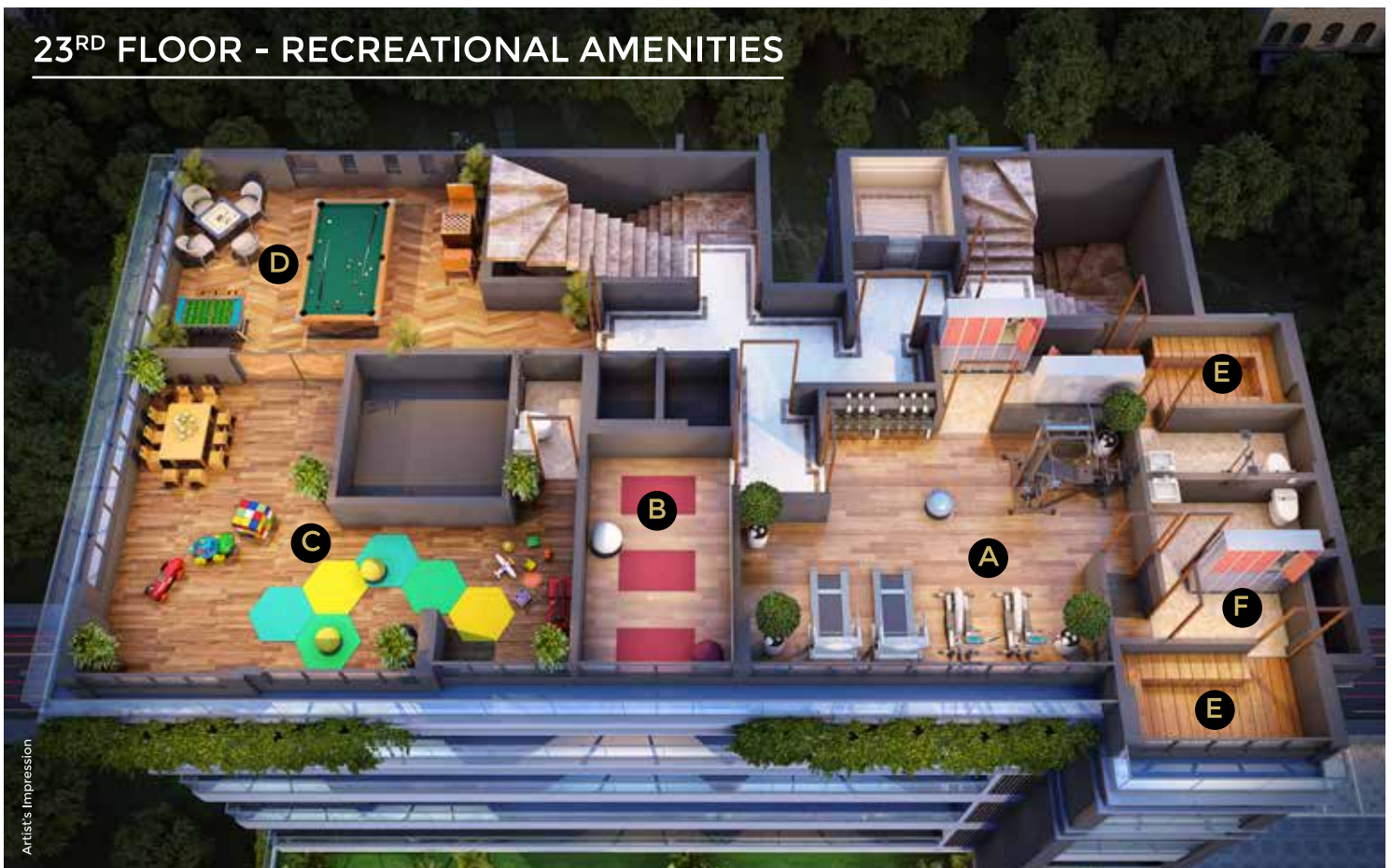
## ROOFTOP AMENITIES



Artist's Impression

- |                                  |                            |                                 |
|----------------------------------|----------------------------|---------------------------------|
| <b>A.</b> Infinity Swimming Pool | <b>D.</b> Rooftop Deck     | <b>G.</b> Senior Sit-out Area   |
| <b>B.</b> Toddlers Pool          | <b>E.</b> Green Lawn       | <b>H.</b> Reflexology Pathway   |
| <b>C.</b> Rooftop Jacuzzi        | <b>F.</b> Yoga & Meditaion | <b>I.</b> Party Lounge with BBQ |

## 23<sup>RD</sup> FLOOR - RECREATIONAL AMENITIES



Artist's Impression

- |                      |                                |                           |
|----------------------|--------------------------------|---------------------------|
| <b>A.</b> Gymnasium  | <b>C.</b> Children's Play Zone | <b>E.</b> Steam Bath Zone |
| <b>B.</b> Zumba Room | <b>D.</b> Indoor Games         | <b>F.</b> Changing Room   |

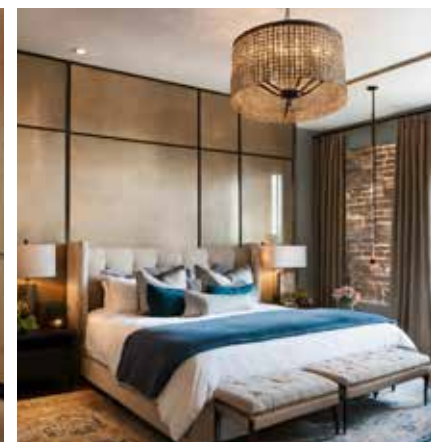
## Tower Features

- Big Terrace Flats
- Branded High-Speed Elevators
- 24x7 CCTV Surveillance
- Fire Fighting System
- EV Charging Point
- Ample Parking Space
- Mivan Construction Technology

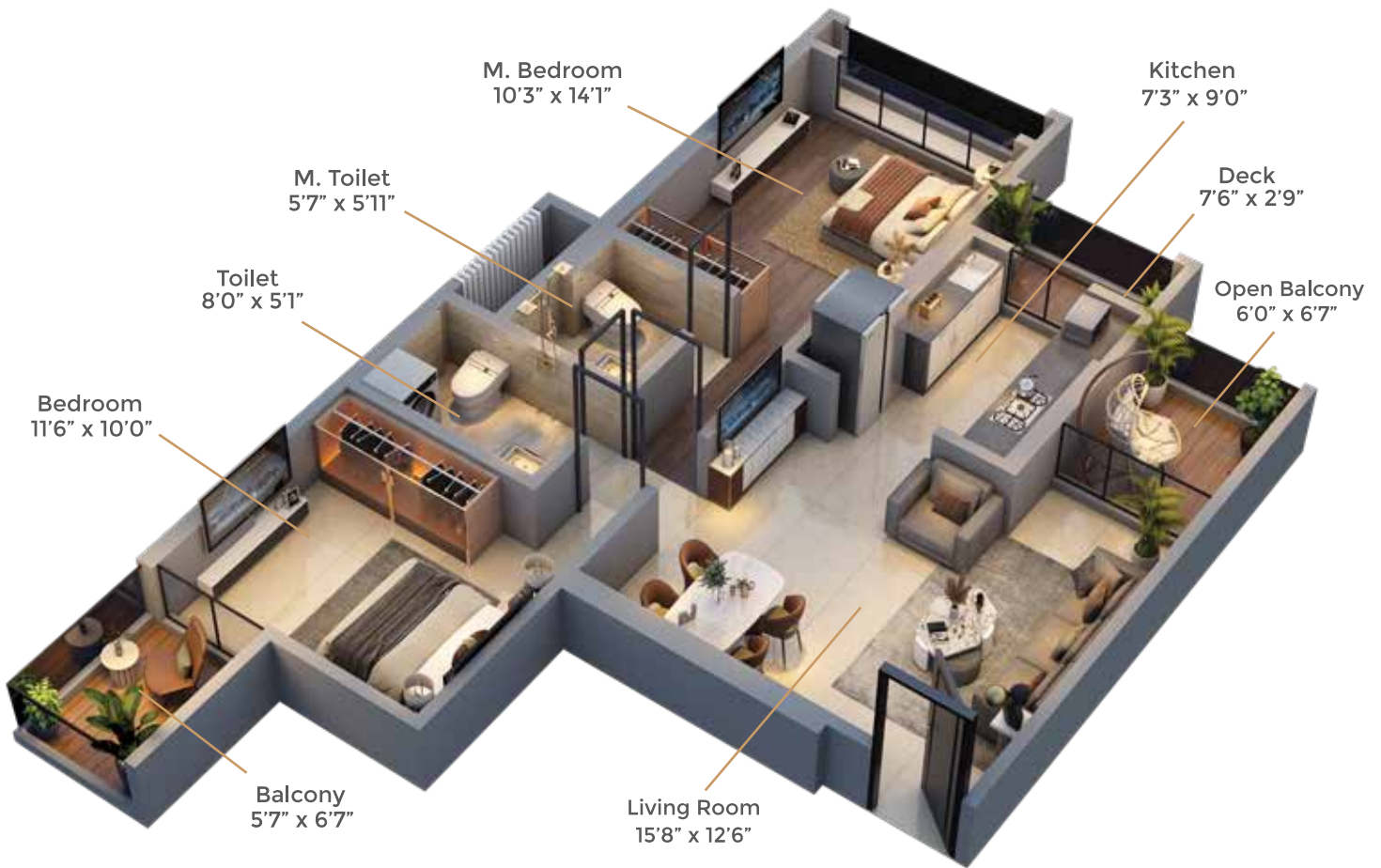


## Internal Features

- Vastu Compliant Homes
- Branded Flooring and Tiles
- Branded Paints, windows & doors
- Branded Switches & Cables
- Spacious Bedrooms with Balcony
- Comfortable Kitchen Layouts
- Branded Bathroom Fixtures
- Branded Piping and fittings



## 2 BHK - 782 Sq.Ft. 1<sup>ST</sup> TO 7<sup>TH</sup> - 9<sup>TH</sup> TO 12<sup>TH</sup> FLOOR



## 3 BHK - 831 Sq.Ft. 19<sup>TH</sup> TO 22<sup>ND</sup> FLOOR







19<sup>TH</sup> TO 22<sup>ND</sup> FLOOR PLAN



# HOME, SURROUNDED BY LIFE'S ESSENTIALS

## Transport & Commute

Bang On Thane Belapur Road	0 Mtr
Airoli Station	4 Kms
Dighe Station	750 Mtrs
Upcoming Freeway - Airoli Katai Naka	2.9 Kms
Mulund Airoli Bridge	3.5 Kms
Thane Kalwa Bridge	2.4 Kms
Eastern Exress Highway	10 Kms

## Corporate Parks & Workspaces

Opp. TATA Strive & I.G. International	0 Mtr
Cape Gemini	700 Mtrs
Infosys	720 Mtrs
Mindspace & Gigaplex	2.7 Kms
Reliable Tech Park	2 Kms
Accenture	2 Kms
SIEMENS	3 Kms
Millennium Business Park	9 Kms
Reliance Corporate Park	7 Kms
Eastern Express Highway	10 Kms

## Retail & Entertainment

Reliance Smart	3 Kms
D-mart	3.8 Kms
Major Shopping Hubs within	2 - 5 Kms
Entertainment Centers within	2 - 5 Kms
Markets & Essentials	1-3 Kms

## Schools & Colleges

New Horizon School	2.1 Kms
Euro School	2.3 Kms
Vibgyor	3.6 Kms
KC college	1.7 Kms
St Xaviers School	2 Kms

## Hospitals

Sai MultiSpeciality	180 Mtr
Apple Hospital	3.7 Kms
Lifeline Hospital	3.4 Kms
Indravati Hospital	3.7 Kms
Sanjivani Hospital	3.7 Kms



## WHY CHOOSE PARTH ?

- ✔ Built By A Legacy Of Trust
- ✔ Now Or Never Prices
- ✔ Seamless Connectivity
- ✔ Flexible Payment Schemes
- ✔ Larger Than Life Layouts
- ✔ Life Time Lake & Hill Views
- ✔ Abundance Of Amenities
- ✔ Rapid Banking Assistance

Site Address: Parth Lakeview, Opp. IG International & TATA Strive, Thane Belapur Rd, Airoli, Navi Mumbai - 400 708  
 Corporate Address: Parth World LLP, Parth Magnus, Shop No 5,6,7, Plot No. 22, Sanpada, Navi Mumbai - 400 705



SCAN QR  
 MahaRERA Registration No: PR1330002400074  
 Available At <https://maharera.mahaonline.gov.in>

✉ [sales@parthgroup.net](mailto:sales@parthgroup.net)  
 🌐 [www.parthgroup.net](http://www.parthgroup.net)

☎ 72 08 09 06 78

Disclaimer: The Developer reserves the right to make changes at any time, if necessary without notice or obligation. All Measurements and specifications given elsewhere in this document are subject to minor variations without specific or general notice. Elevation given is an artistic impression only. This document does not constitute neither a legal offer nor an invitation to an offer. Images are for representational purpose only. All the distances calculated are approximate. The furniture and fixture shown in plans are suggestive and not to be provided. \*T&C Apply

A Project By



**PARTH**  
 EXCELLENCE IS A COMMITMENT